

GENONCALL

PC Software Operation Manual

***Applicable to KUTAI controller with
Internet connection function***

***(Including controller with optional
network communication module)***



KUTAI ELECTRONICS INDUSTRY CO., LTD.

TEL : +886-7-8121771

FAX : +886-7-8121775

Website : www.kutai.com.tw

Headquarters : No.3, Ln. 201, Qianfu St., Qianzhen Dist., Kaohsiung City 806037, Taiwan



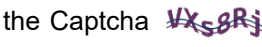

TABLE OF CONTENTS

Section	Page
SECTION 1 SOFTWARE INSTALLATION	3
1.1 Create a Personal Account on The Kutai Server.....	3
1.2 PC Software Download.....	3
SECTION 2 PC SOFTWARE OPERATION INSTRUCTION	3
2.1 Account Password Login	3
2.2 Control Interface Description	3
2.3 Operation Screen Description.....	4
2.4 GCU-4K Monitoring Screen Example	4

SECTION 1 : SOFTWARE INSTALLATION

1.1 Create a Personal Account on The Kutai Server

Before using GenOnCall for PC software, you must apply for a personal connection account.

Go to the KUTAI website www.kutai.com.tw ▶ Click *Member Center* to enter member system ▶ Click on CREATE AN ACCOUNT ▶ Read the *Terms of Services* carefully, then enter the Captcha  and press I Agree ▶ Fill in the user name, email account and password, enter the Captcha  and click submit ▶ Log-in to the email account entered and read the mail send by the server ▶ Click the account activation link ▶ The account application procedure is complete.

1.2 PC Software Download

Go to KUTAI website www.kutai.com.tw ▶ Click Downloads ▶ Software ▶ download the GenOnCall For PC software (zip file)

Download URL : <https://www.kutai.com.tw/documents>

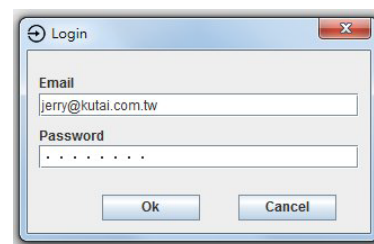
Application software name : "GenOnCall For PC"

SECTION 2 : PC SOFTWARE OPERATION INSTRUCTION

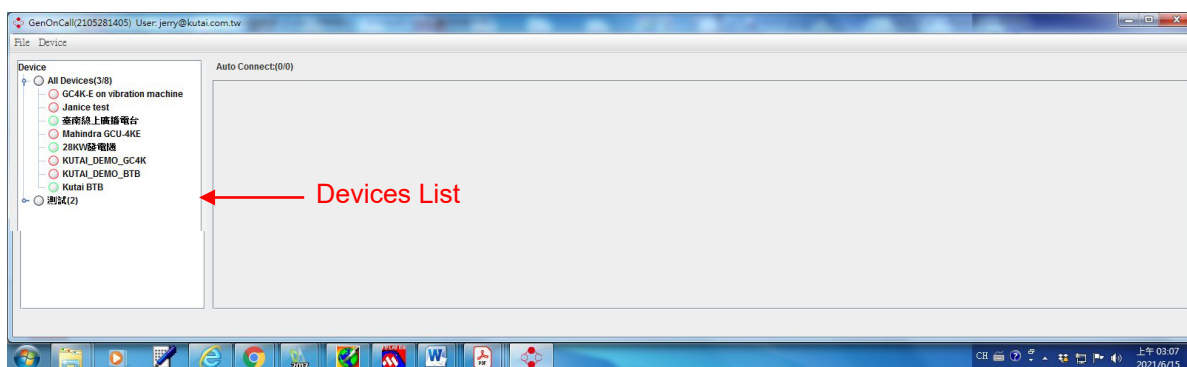
2.1 Account Password Login

Unzip the file and execute the "GENONCALLFORPC.EXE".

Click *File* ▶ Click *Login* ▶ Enter the Email address and Password ▶ Click OK as shown on the right.



2.2 Control Interface Description





File Function Description :

- **Login** : Login with KUTAI member.
- **Language** : Change the language of the screen.
- **Logout** : Logout of KUTAI member.
- **Exit** : Exit the GenOnCall PC software interface.

Device Function Description

- **All Device Auto Connect** : Connect all online devices on the device list.
- **Clean All Connect** : Clear all connected devices.

The  on the devices list means this device is offline now ;

The  means the device is online.

- **Auto Connect** : A tick in the box means that the device will automatically connect ; otherwise, the device will not be automatically connected.
- **Device Controller** : Click to open the device monitor screen.
- **About** : Display device serial number. When using KCU for remote connection , only the KCU serial number will be displayed.



2.3 Operation Screen Description

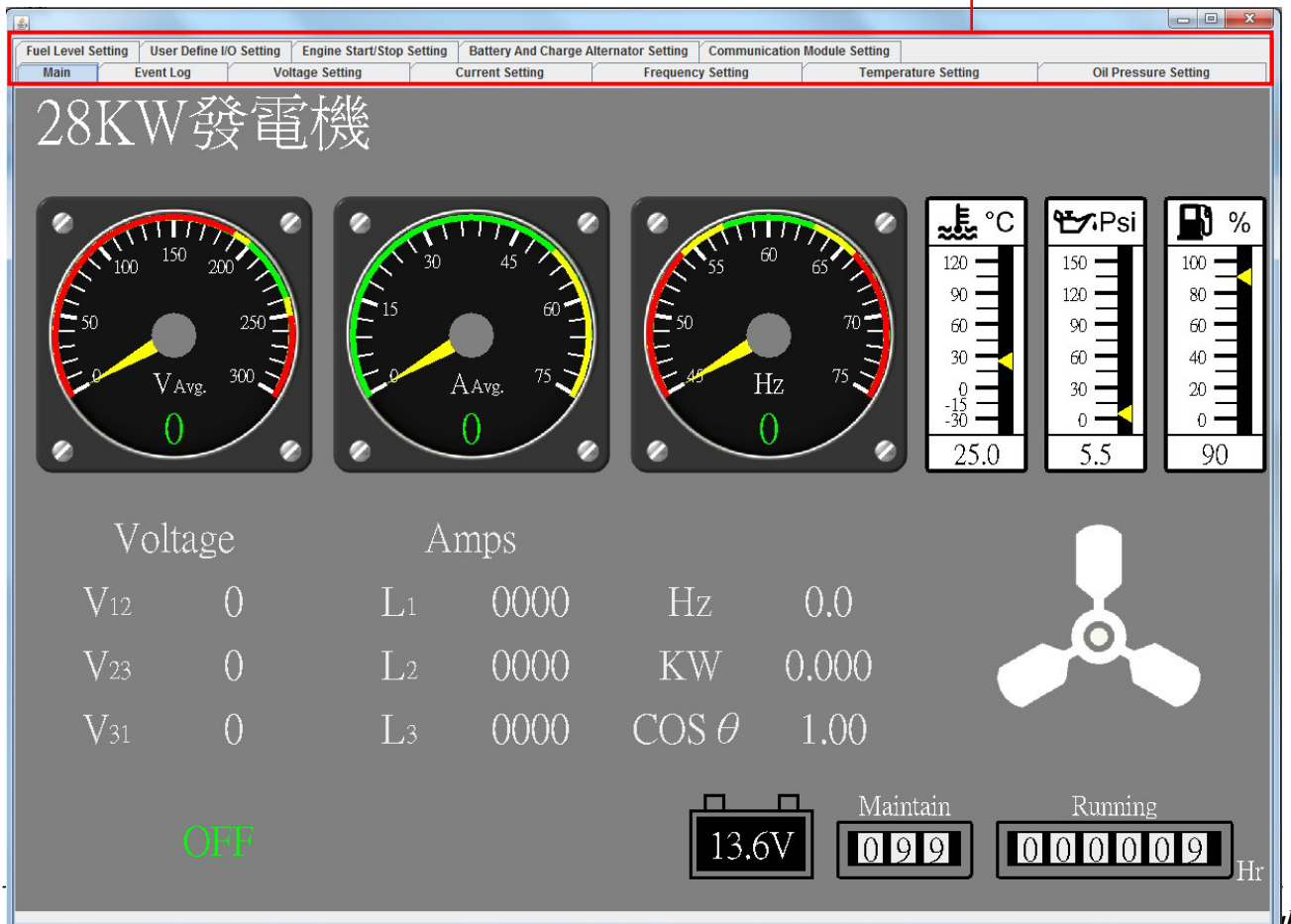


Click the device name to open the stand-alone connection

Devices electrical parameter display area

2.4 GCU-4K Monitoring Screen Example

Screen page and system parameters selection



Attention!!

GenOnCall For PC software only provides remote monitoring of the real-time power parameters and system parameters of the connected control units. Cannot directly operate the control unit, modify system parameters or perform device binding or unbinding. To perform complete functions of remote monitoring and operation used the smart mobile devices for connection.